



Shared Law Office – Second Floor Available *Prime Location in Plantation*

1232 N University Dr
Plantation, FL 33322

For Lease

martinezteamcommercial.com

Position your practice for success in this well-maintained and professional shared law office building located in the heart of Plantation. The available second-floor space offers a quiet, private setting ideal for attorneys, legal professionals, or other office-based businesses looking for a turnkey workspace in a prestigious area.

Marshall Chandler
954-803-9055



**MARTINEZ
TEAM**



Lease Price: \$36.00 Per Square Foot Gross

Space Type: Professional Office

Office Space: 1,000 SF

Zoning: B-7Q (Office Use)

Three Offices & a Conference Room

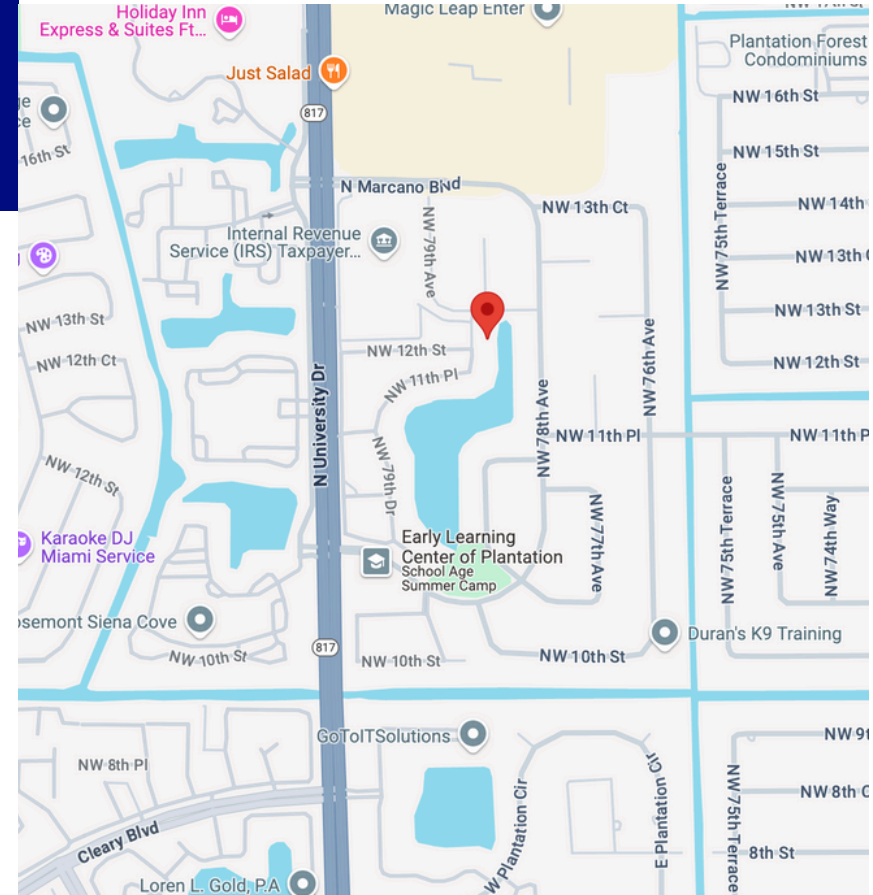
HIGHLIGHTS

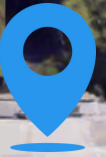
- Prime location on N University Dr with excellent visibility and easy access
- Professional shared law office environment
- Private second-floor office suites available
- Flexible lease terms
- Ideal for solo attorneys, small law practices, or other professional services
- Ample parking for clients and staff
- Convenient proximity to major highways, courthouses, and local amenities

DEMOGRAPHICS

	2 mile	5 mile	10 mile
2024 Population	78,976	444,393	1,267,777
2024 Households	31,403	167,201	490,901
Average Household Income	\$79,212	\$77,337	\$90,460

1232 N University Dr
Plantation, FL 33322





th Terrace

NW 12th Ct

NW 12th Ct

NW 12th Ct

NW 78th Ave

NW 78th Way

NW 12th St

NW 11th Pl

NW 78th Ave

Marshall Chandler
954-803-9055



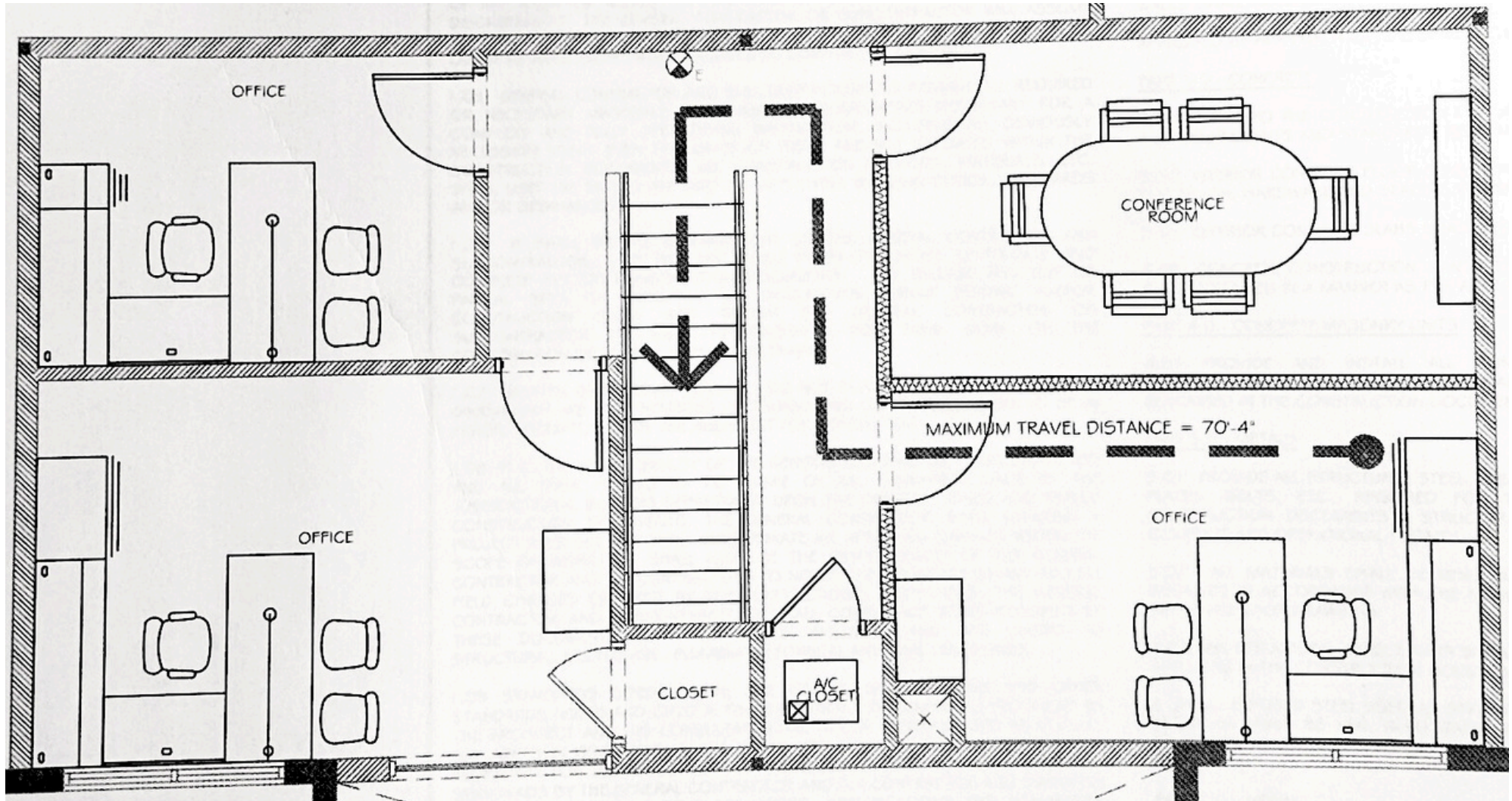
Marshall Chandler
954-803-9055



Marshall Chandler
954-803-9055
Marshall@MartinezTeamCommercial.com



Marshall Chandler
954-803-9055



Floor Plan