



## *Small Bay Warehouse Spaces*

350-362 NW 27th Ave  
Fort Lauderdale, FL 33311

*For Lease*

[martinezteamcommercial.com](http://martinezteamcommercial.com)

Lease a small bay warehouse in a premier destination that's strategically located in the city of Fort Lauderdale, FL. The warehouses are in the heart of a bustling commercial hub. Our warehouse park offers an unparalleled opportunity for businesses seeking a convenient location, flexibility, and a thriving environment.



**Asking Price: \$18.38 PSF Base Rent**

**NNN is \$2.89 PSF**

**The size of the Bays is 1100 SF**

**Type of Property: Warehouse Spaces**

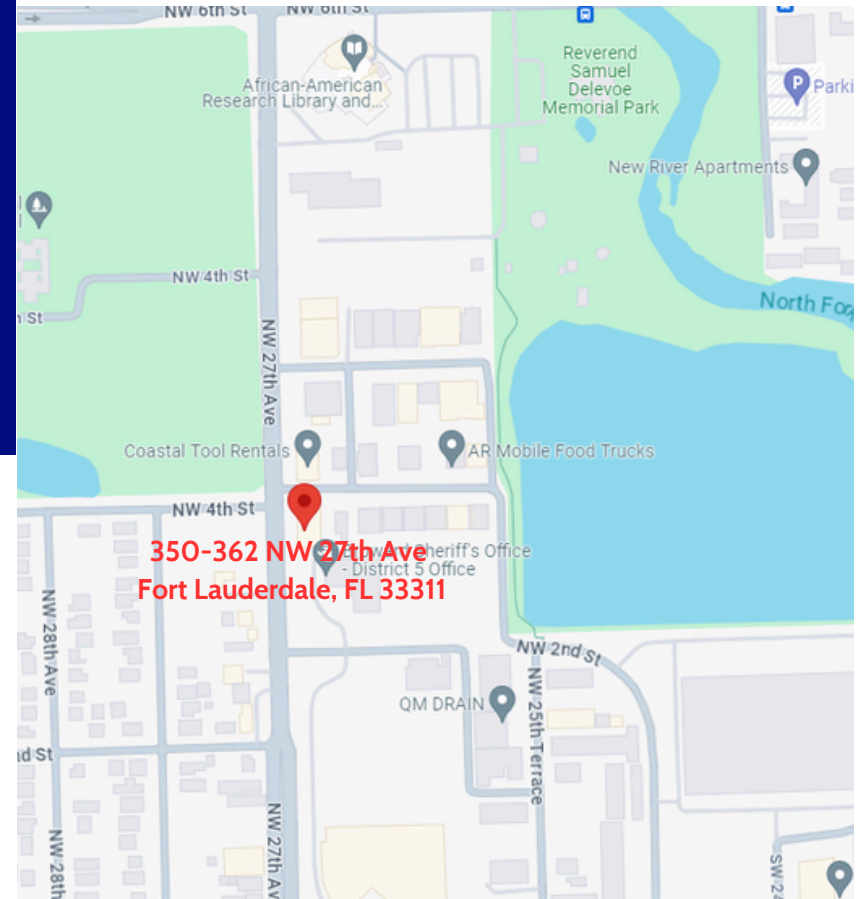
### HIGHLIGHTS

- 3-5 year leases
- Plenty of Paved Yard in the rear for deliveries.
- 12' clear ceilings
- A/C in the front office
- Pride of Ownership

### DEMOGRAPHICS

	2 mile	5 mile	10 mile
2023 Population	71,055	384,700	1,234,314
2023 Households	23,989	154,481	503,373
Average Household Income	\$69,063	\$82,855	\$83,933

350-362 NW 27th Ave  
Fort Lauderdale, FL 33311





351

351

351

351

352

352

350

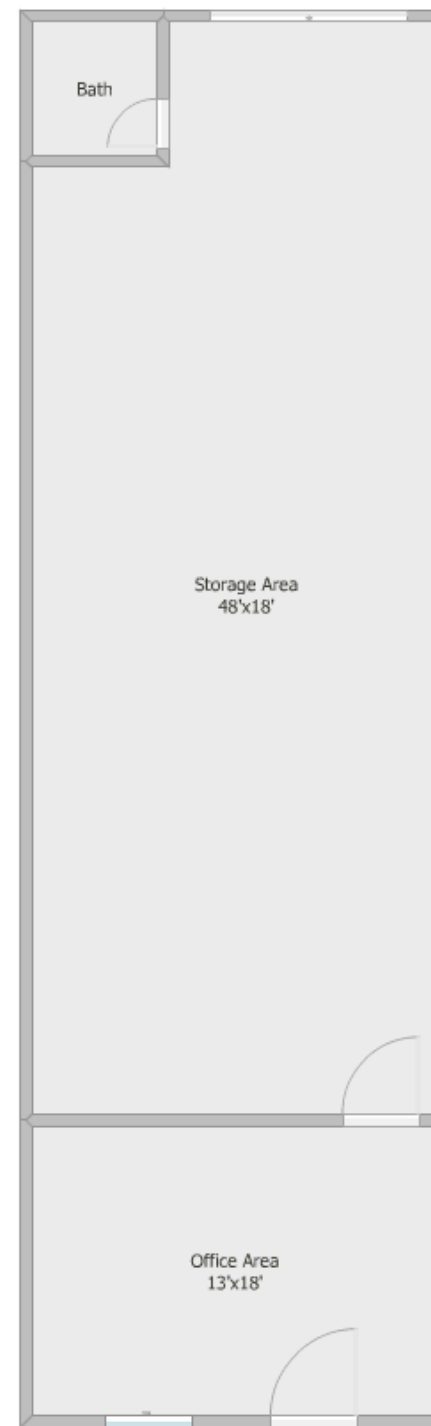
350





# Floor Plan

350-362 NW 27th Ave  
Fort Lauderdale, FL 33311

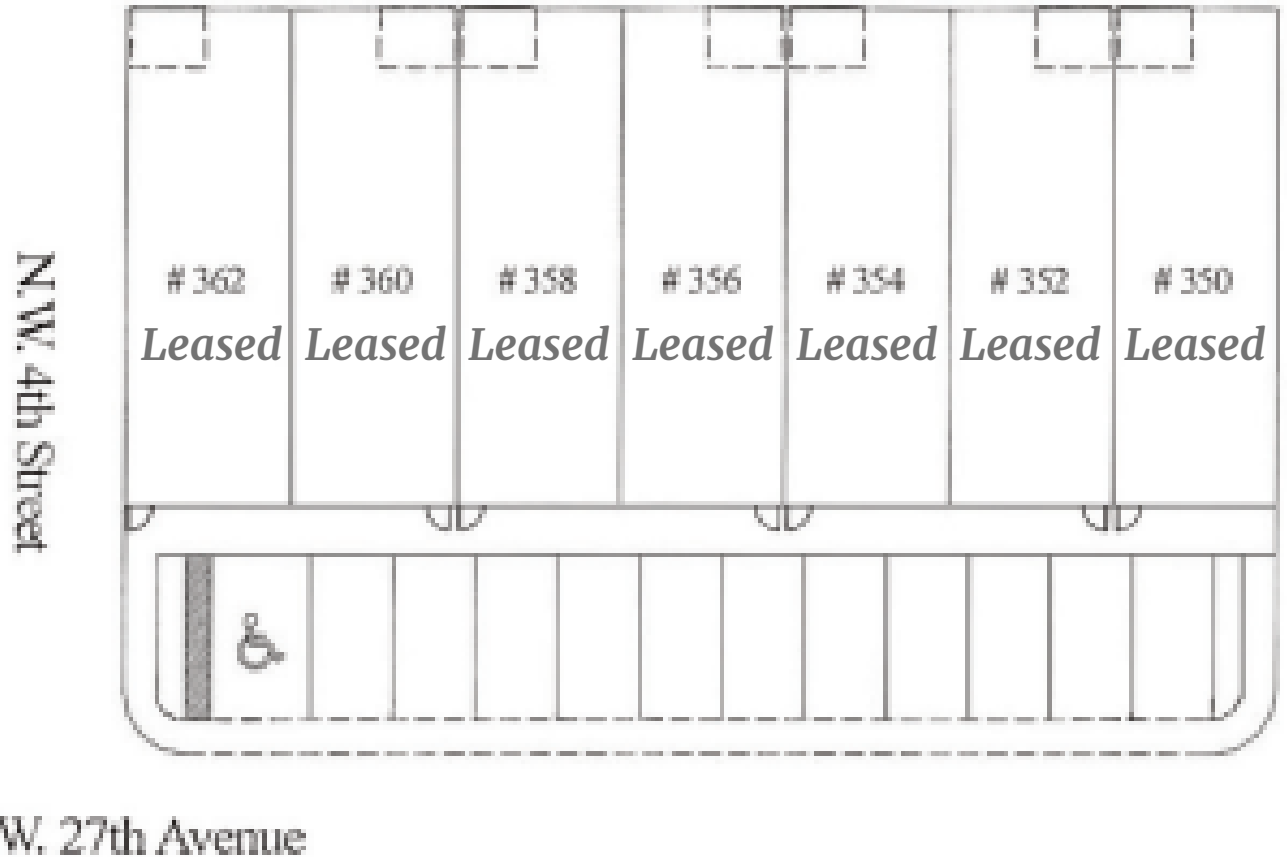


Gus Martinez, P.A.  
954.394.7078  
GusMartinez@KW.com



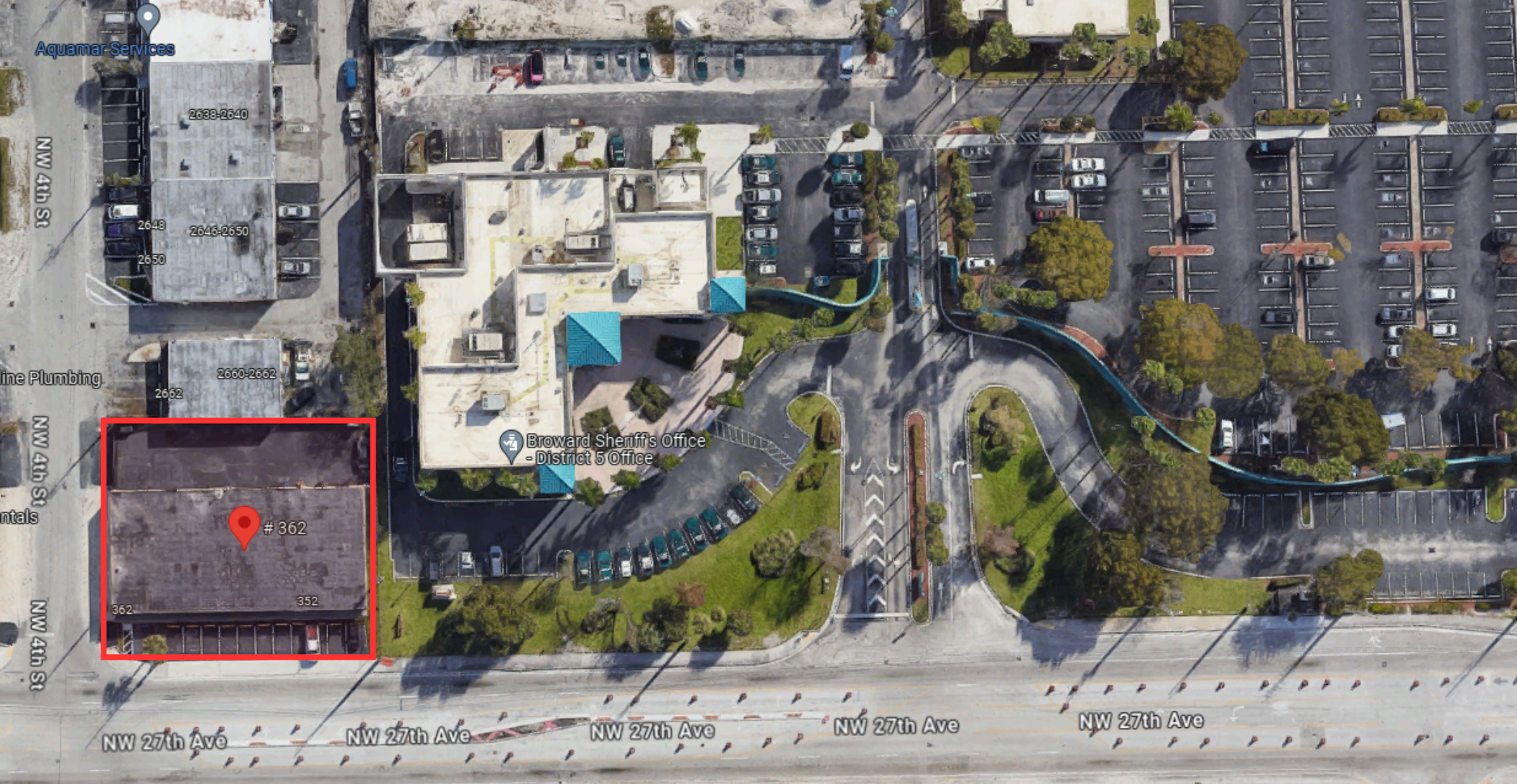
# Site Plan

350-362 NW 27th Ave  
Fort Lauderdale, FL 33311



Gus Martinez, P.A.  
954.394.7078  
GusMartinez@KW.com





## *Aerial View*

350-362 NW 27th Ave  
Fort Lauderdale, FL 33311



Gus Martinez, P.A  
954.394.7078  
GusMartinez@KW.com

